



3 - PHASE PHANTOM LOAD 467B-30 DATASHEET



REDPHASE INSTRUMENTS

Contents

	Section
Application	1
Where it is used	1.1
Typical Connection	1.2
Hardware features	2
Power Supply	2.1
Power Source & Load Range	2.2
Supply Protection	2.3
Interface	2.4
Model 467B-30 Package	3
467B-30 Case	3.1
Case Sizes (LxWxH)	3.2
Weight	3.3
Cable Accessory schematic	3.4

1.0. APPLICATIONS

1.1. Where it is used

The Model 467B-30 is a modestly priced, light-weight field portable instrument designed for testing CT and Direct connected Polyphase meters. The Model 467B-30 can also be used for many routine workshop and field tests where a load is required to test for correct installation and phasing of equipment.

1.2. Typical Connection

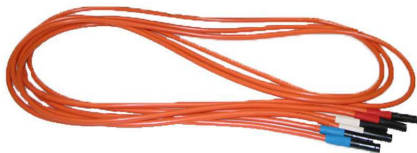
Direct connection

The Model 467B-30 comes with a set of heavy gauge cable pairs with safety shrouded plugs as shown below for Direct Connection set ups. The Current and voltage cables are paired for this set up.



For a CT connected set up

A single cable per phase may be used in times of commissioning where the utility engineer must pass the cable through a window CT and power up the primary side to verify correct wiring and phasing.



Also a third set of current cables are provided for a dual cable per phase CT connection when required.

In both CT cases as per page 5 a separate supply cable is provided which connects to the bottom of a 3 phase, 4 wire meter.



2.0. HARDWARE FEATURES

2.1. Power Supply

The model 467B-30 is powered from a 3 phase 4 wire nominal 240V/415V supply from the meter.

2.2. Power Source & Load Range

The Model 467B-30 has three (3) individual load cells.

The output currents are in phase with the supply voltages and the amplitude can be varied from 0-100% using the "variacs" on the front panel.

With the heavy gauge test leads supplied, the 467B-30 is capable of providing up to 100 Amps of load current per phase.

Model 467B-30 is able to provide a 100VA load per phase at 100 Amps and 1 Volt.

2.3. Supply Protection

The supply voltage is protected by a 10 Amp rated circuit breaker.

There is also a fan on the front panel which circulates air through the 467B-30 to keep the three load cells cool.

2.4. Interface

The 467B-30 has 3 neon lamps on the front panel which indicate which phase is powered from the supply.

3.0. MODEL 467B-30 PACKAGE

3.1. 467B-30 Case

The Model 467B-30 uses the well known "Pelican" brand injection moulded plastic case.

The case is robust and hard wearing.

There is an internal aluminium chassis and an aluminium front panel with a reverse screened "Lexan" polycarbonate finish.

3.2. Case Sizes (L x W x H)

467B-30 Case dimension:

Internal: 501mm X 279mm X 193mm

External: 559mm X 351mm x 229mm.

3.3. Weight

467B-30 ~12kgs

Transit case: with trolley ~6kgs

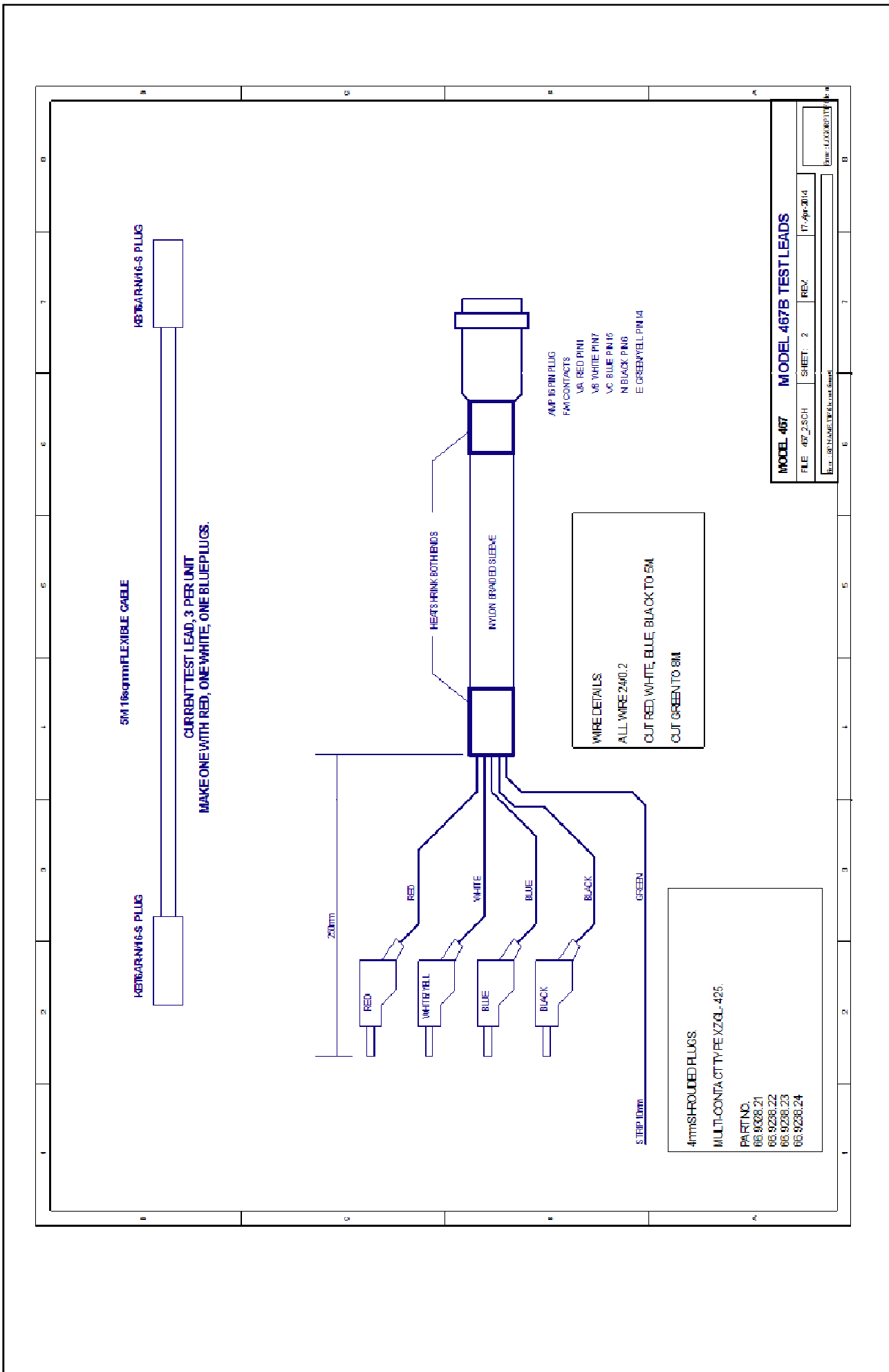
Test leads & accessories: ~5kgs

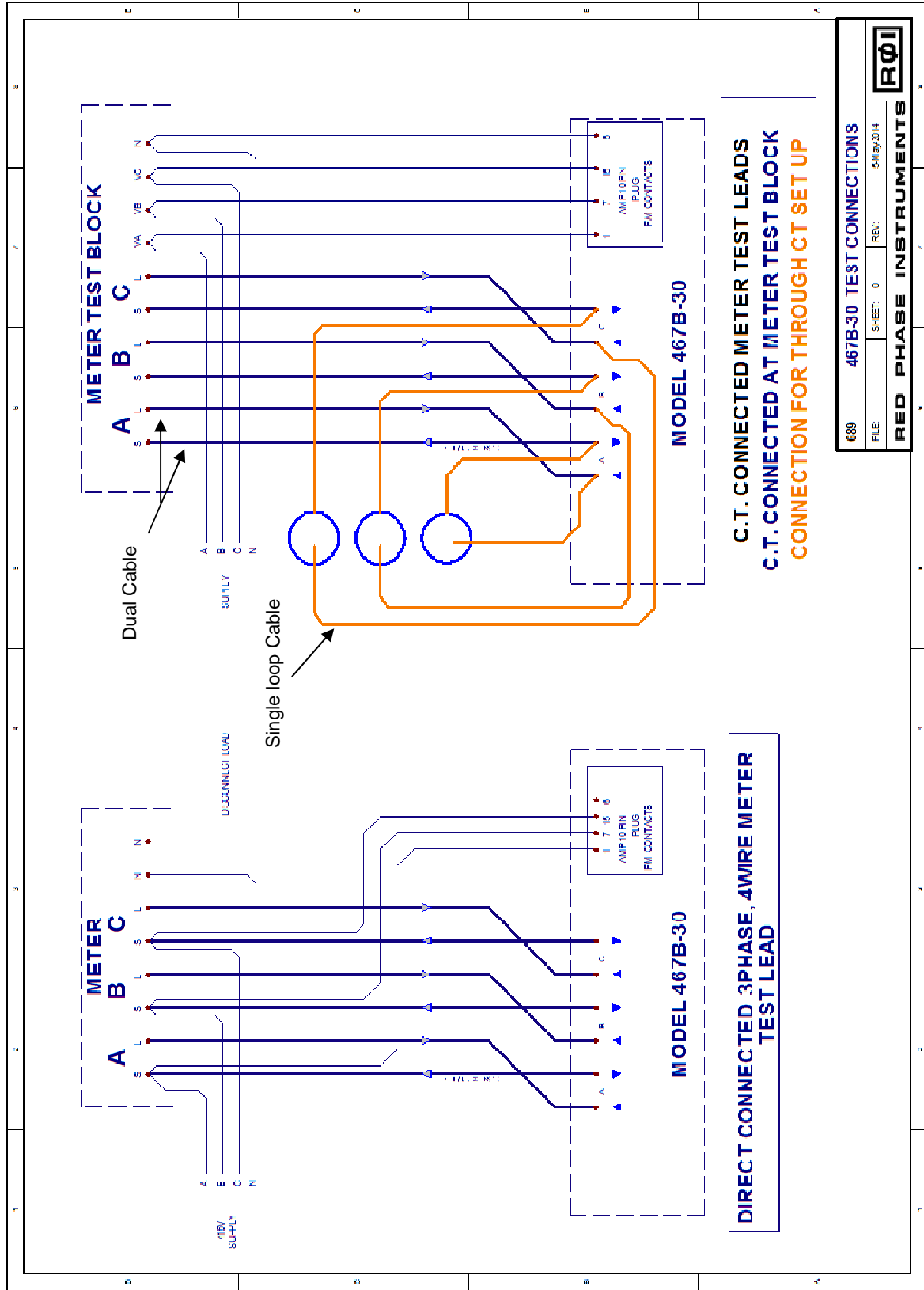


Trolley type with retractable handle .

Strong polyurethane wheels with stainless steel bearings.

3.4. Cable Accessory Schematic





**C.T. CONNECTED METER TEST LEADS
C.T. CONNECTION AT METER TEST BLOCK
CONNECTION FOR THROUGH CT SET UP**

**DIRECT CONNECTED 3PHASE, 4WIRE METER
TEST LEAD**

689	467B-30 TEST CONNECTIONS
FILE:	SHEET: 0 REV: \$-M 9/2014
RED PHASE INSTRUMENTS	

